



Steele Creek Area Transportation Projects

Steele Creek Residents Association
March 12, 2015

CRTPO

- Allocation of federal transportation planning funds for Charlotte Urbanized Area
- Prepare Long Range Transportation Plans
- Work with NCDOT to prepare Transportation Improvement Plans

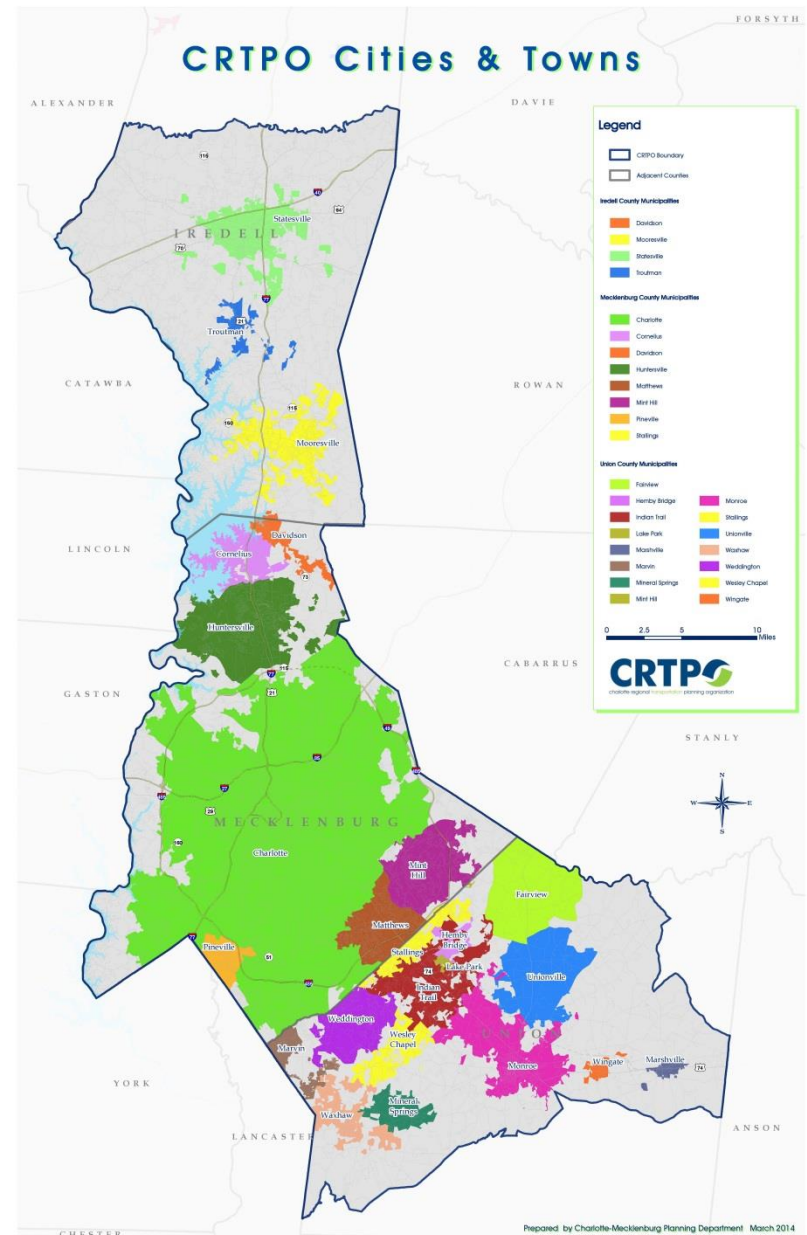
Charlotte DOT

- Review and approve any land development projects that may impact the Charlotte transportation system
- Identify and manage infrastructure improvement projects on Charlotte and some NCDOT roadways
- Work with CRTPO and NCDOT to identify Charlotte's Transportation needs

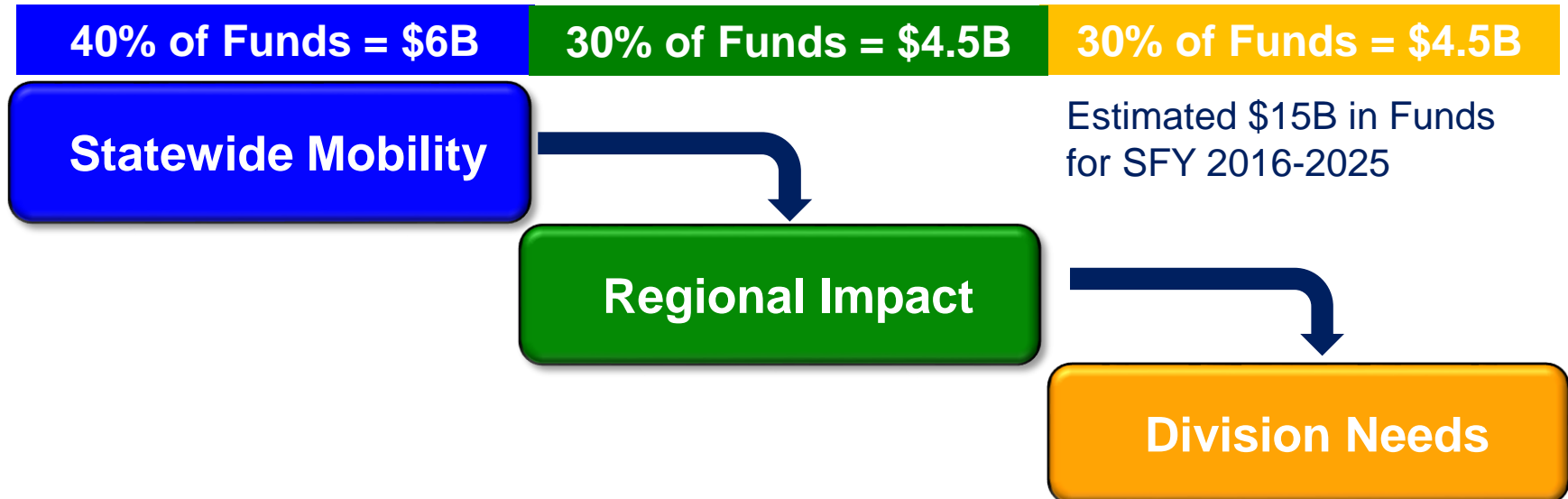
NCDOT

- Work with CDOT to identify improvements needed as a result of development along NCDOT maintained roadways
- Work with CRTPO to prioritize projects for funding
- Routine and long term maintenance and operations on NCDOT maintained facilities

- Federally-designated metropolitan planning organization (MPO) for Charlotte urbanized area
- Responsible for transportation planning in Mecklenburg, Union and Iredell counties
- Core responsibility: allocation of federal transportation funds
- Primary tasks
 - Metropolitan Transportation Plan
 - Transportation Improvement Program



- Released December 2014
- Covers 2016 through 2025
- First state TIP under Strategic Transportation Investments (STI)
- STI established Strategic Mobility Formula
 - based on data-driven project scoring
 - allocates funding



Steele Creek Road

Segment	Shopton Road W to S. Tryon St
Right-of-way	FY 2022
Construction	FY 2024

Project subject to reprioritization

Steele Creek Road/Hamilton Road Intersection

Right-of-way	FY 2019
Construction	FY 2021

DRAFT TIP Public Comment periods:

*NCDOT will hold a public comment period and public meetings in March and April
CRTPO will hold a public comment period and a public meeting in June*

I-77 South

- Brookshire Frwy south to I-485
- Widening to 10 lanes
- Feasibility study complete
- Right-of-way acquisition FY 2024
- Construction not funded
- Affected by STI corridor cap

Shopton/Beam Intersection

- Convert existing intersection to roundabout
- New sidewalks, bike lanes, crosswalks
- Scheduled for construction FY 2017

Neil Burke, AICP, PTP
nburke@charlottenc.gov

704-353-0198

www.crtpo.org