

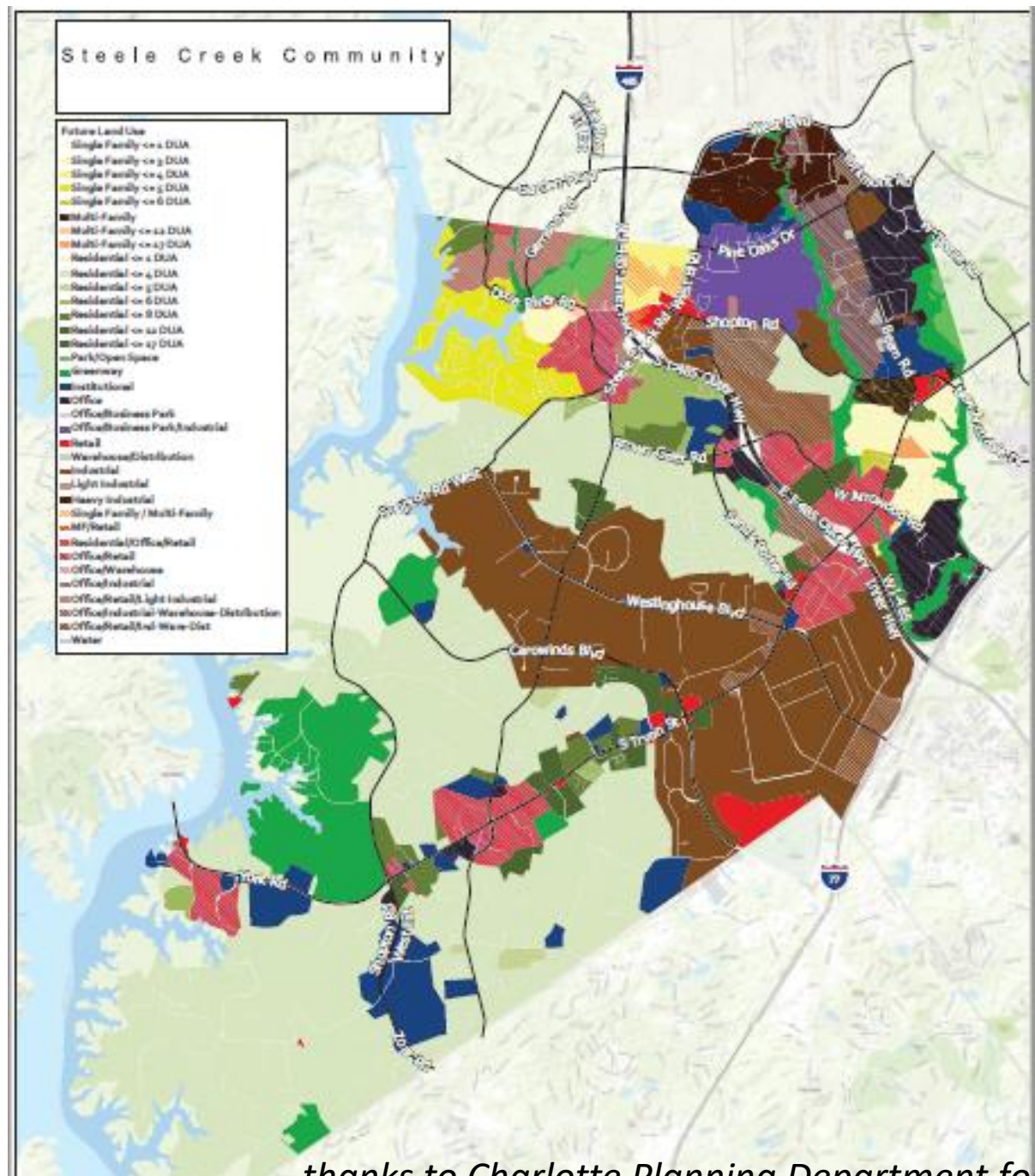


Steele Creek Vision in 2040 !

Upgraded roads and mass transit

New schools

New Greenways and Parks



Steele Creek has historically been, and still is, a huge industrial area along Westinghouse, Arrowood, and Carowinds.....largest in the state !

Over the past 12 years, Steele Creek has seen substantial growth with single family homes, townhomes, apartments, retail, businesses, schools and parks.

...thanks to Charlotte Planning Department for the map

STEELE CREEK

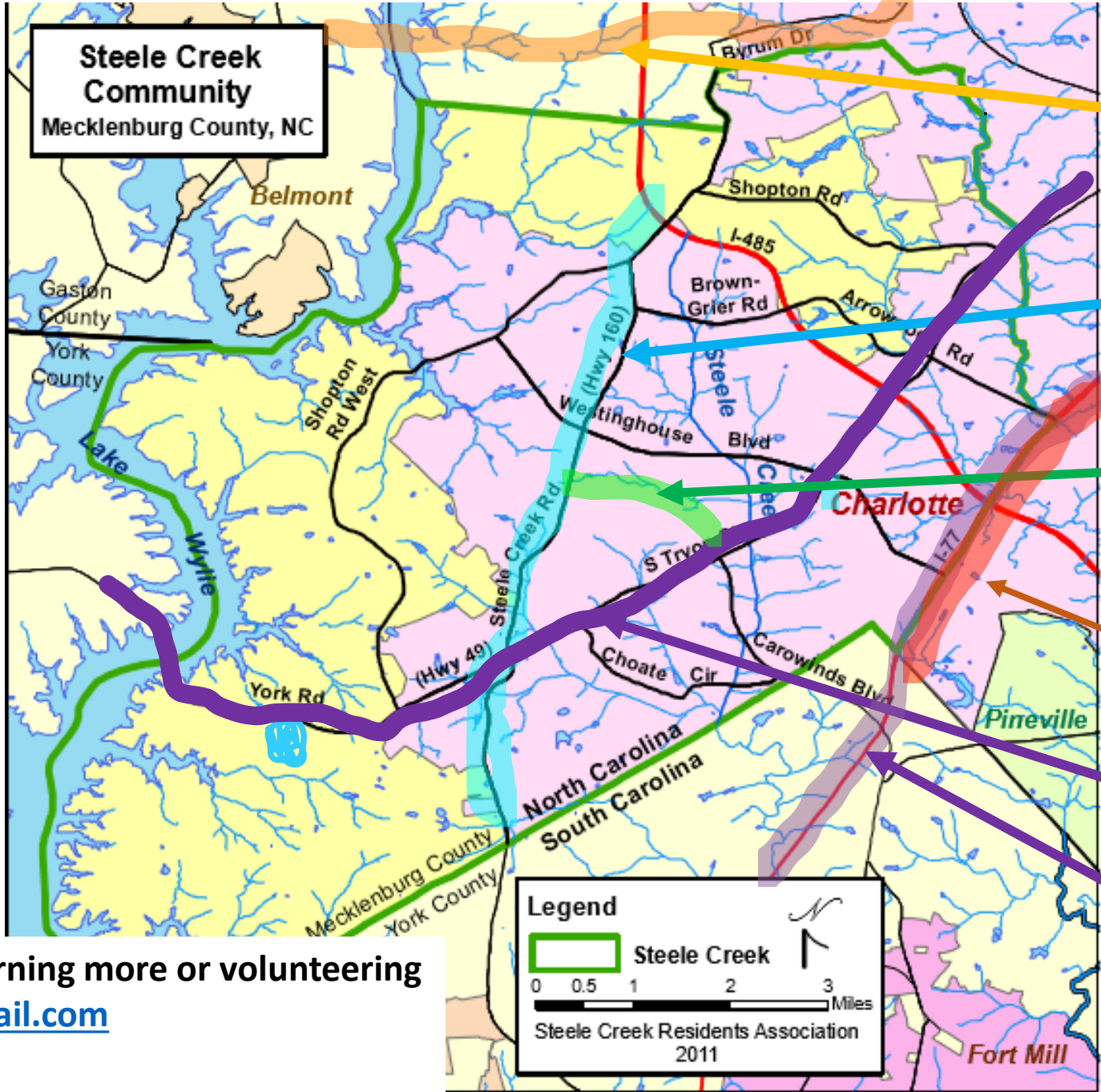
RESIDENTS ASSOCIATION



What Steele Creek needs now is improved infrastructure to support our growth and our needs

- Improved Roads
 - Mass Transit
- New Greenways
- Updated Parks
 - Schools

Transportation Projects in Steele Creek



Meck / Gaston bridge across Lake Wylie under NCDOT study

NC Hwy 160 to 4 lanes
Completion Date: 2028

Carowinds Blvd Ext
Completion Date: 2030

NC I-77 Project
Completion Date: 2030

NEW SCRA CONCEPT
Add Mass Transit from South Carolina on 77 and 49 !
Work with CATS and York County to provide

If you are interested in learning more or volunteering
SCRA.Transportation@Gmail.com

STEELE CREEK

RESIDENTS ASSOCIATION

The logo for the Steele Creek Residents Association (SCRA) is a circular emblem with a green and brown color scheme. It features a stylized tree or leaf design in the background and the letters 'SCRA' in a bold, sans-serif font across the center.

Specifically on transportation issues

We want to thank our new City Council Representative

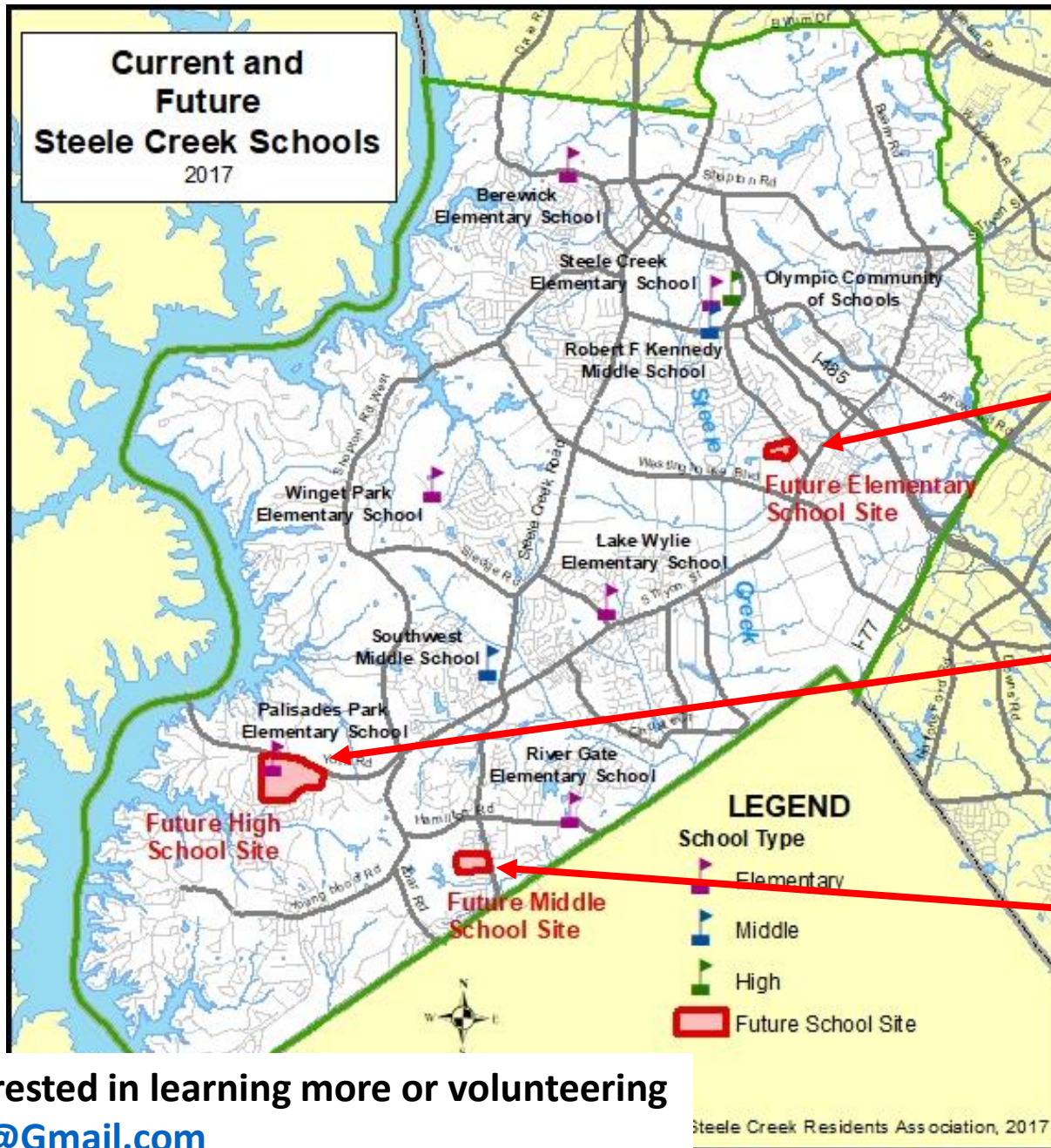
Victoria Watlington for leading a Town Hall meeting

Thursday

March 19th

6:30 pm

Kennedy Middle School



New schools coming to Steele Creek

Future Elementary School

Sandy Porter near Tryon Street
August 2021

Olympic Overflow High School

at Palisades
August 2022

Future Middle School

Hwy 160 near state line
Date: Future bond

If you are interested in learning more or volunteering
SCRA.Schools@Gmail.com

STEELE CREEK

RESIDENTS ASSOCIATION

Join SCRA!

Steele Creek needs your help to make this community even better!

Contact the committee that interests you the most !

Roads and Mass Transit

SCRA.Transportation@gmail.com

Schools and Education

SCRA.Schools@gmail.com

Greenways and Parks

SCRA.Greenways@gmail.com

Rezoning and Land Use

SCRA.Rezonings@gmail.com

STEELE CREEK RESIDENTS ASSOCIATION WEB SITE

STEELE CREEK RESIDENTS ASSOCIATION
Serving the Steele Creek Community in Southwestern Mecklenburg County, NC

HOME
STEELE CREEK NEWS
ABOUT THE ASSOCIATION
ABOUT STEELE CREEK
OTHER SITES
MESSAGE BOARD
REZONING
IN THE NEWS
MAPS OF STEELE CREEK
LOCAL GOVERNMENT
CONTACT US

The Steele Creek Community dates back to the 1740's and has been one of the fastest growing residential areas of Mecklenburg County. It also contains one of the highest employment concentrations in the county and is home to several recreation sites. The character of Steele Creek continues to change due to rapid residential, commercial, and other growth in the area. The Steele Creek Residents Association was formed in 1980 to protect the community, to ensure quality development, and to maintain Steele Creek as a great place to live, work, and play. The main purpose of this web site is to share information about services and activities of local government agencies and non-profit organizations in Steele Creek.

Join the Steele Creek Residents Association. Membership dues are \$10 per year. See [About the Steele Creek Residents Association](#).

Click [HERE](#) for a larger map of Steele Creek and other maps showing where Steele Creek is located.

Visit us on **facebook**
Sign up for our **Email list!**
FOLLOW US ON **twitter**

Steele Creek Forum - Please visit the Steele Creek Residents Association Forum to share your thoughts about Steele Creek with your neighbors and view more news. www.steelecreekforum.org

****** Steele Creek Residents Association Annual Meeting is February 22 (12/22/17)**

Latest Steele Creek News
Click on the headlines below to read the latest Steele Creek news stories.

- [4th and 5th Grade Fun Night with Steele Creek YMCA \(2/6/18\)](#)
- [Soccer Signups and Basketball Clinic at Steele Creek YMCA \(2/5/18\)](#)
- [CMS Plans to Consolidate Five Olympic Community Schools \(2/2/18\)](#)
- [TreesCharlotte to Host Workshop about Free Trees for Neighborhoods February 1 \(1/25/18\)](#)
- [February Programs at McDowell Nature Center \(1/22/18\)](#)
- [Winter and Spring 2018 Programs at Berewick Recreation Center \(1/22/18\)](#)
- [I-485 Exit 4 Signs Should Say "Steele Creek Road" not "Fort Mill" \(12/29/17\)](#)
- [Steele Creek Residents Association Annual Meeting is February 22 \(12/22/17\)](#)
- [County Agrees to Have CMPD Continue to Provide Police Services in Unincorporated Steele Creek \(10/17/17\)](#)
- [CMS has Land for Three New Schools in Steele Creek \(9/22/17\)](#)
- [Highway Planning 101 \(7/28/17\)](#)
- [Widening of Highway 160 has been Accelerated to 2021 \(7/17/17\)](#)



*Join
SCRA !*

www.steelecreekresidents.org

