



Mecklenburg County Greenways

Steele Creek Residents Association 2020 Annual Meeting

February 27, 2020

Overview

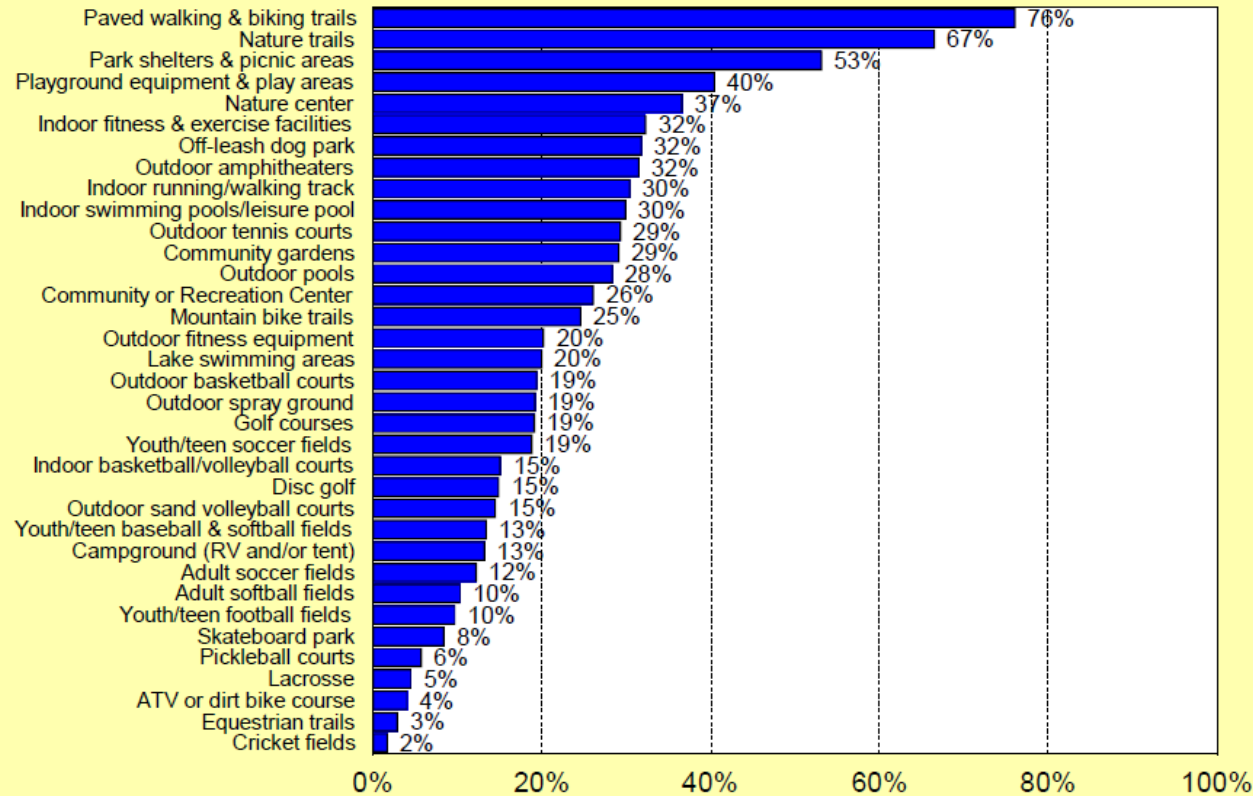
- Greenways are among our most popular amenities
- Greenway Master Plan includes 308 miles
- Currently, 53 miles of greenway are completed



Torrence Creek Greenway

Q5. Parks and Recreation Facilities That Households Have a Need For

by percentage of respondents (multiple choices could be made)



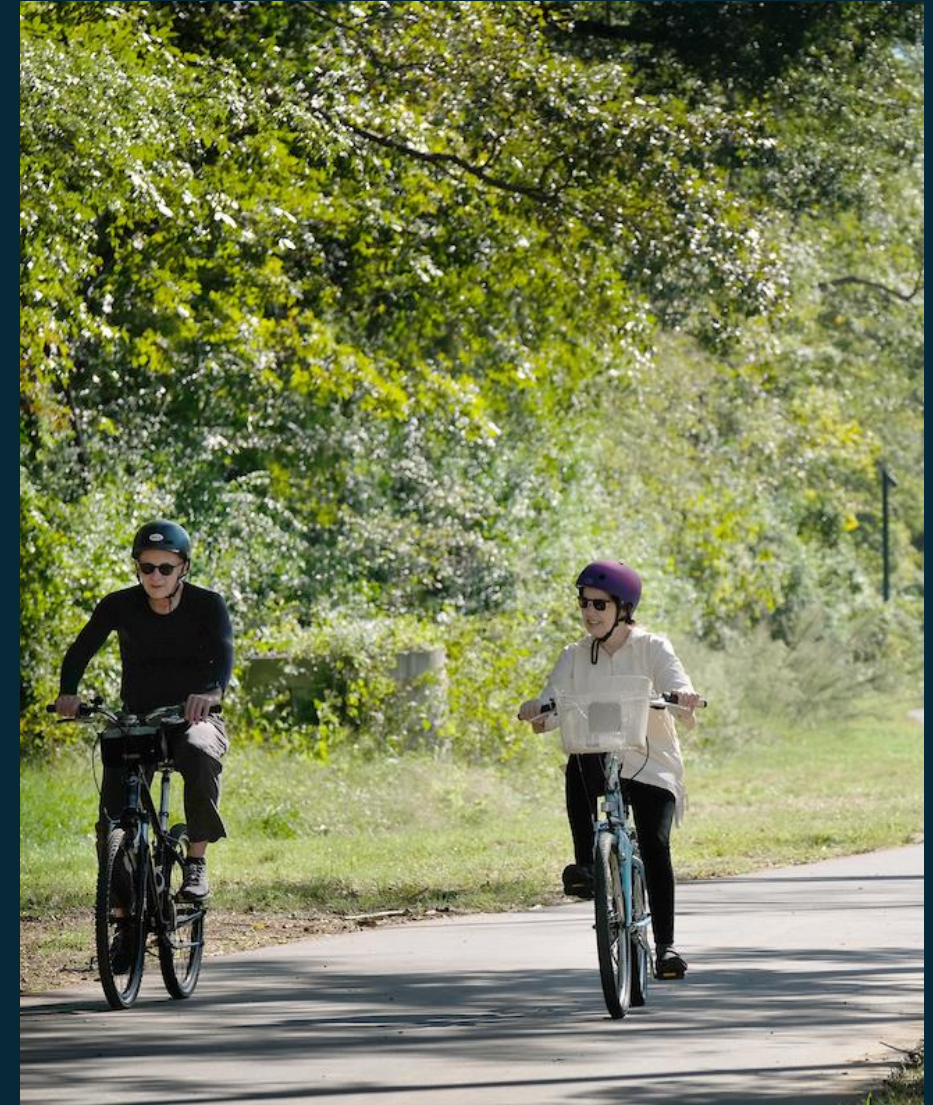
Source ETC Institute (September 2016)

- Linear parks that connect people and places by linking neighborhoods, offices, parks, schools and shopping areas.
- **Vegetated natural buffers** that help protect water quality, reduce the impacts of flooding and provide wildlife habitat.
- Provide alternative ways to move through our city, suburbs and small towns.
- **#1 Amenity** requested by the residents of Mecklenburg County, according to a citizen survey completed as part of our 2015 Master Plan update.

Accelerated Greenway Plan

Miles	Greenway Development Status
53.0	Existing/Developed
4.8	Funded – In Construction
33.3	Funded – In Design
6.8	Funded – By Others
~98	Total Greenway Miles funded through FY2023

- Accelerated plan is to complete 30 miles of greenway by 2023

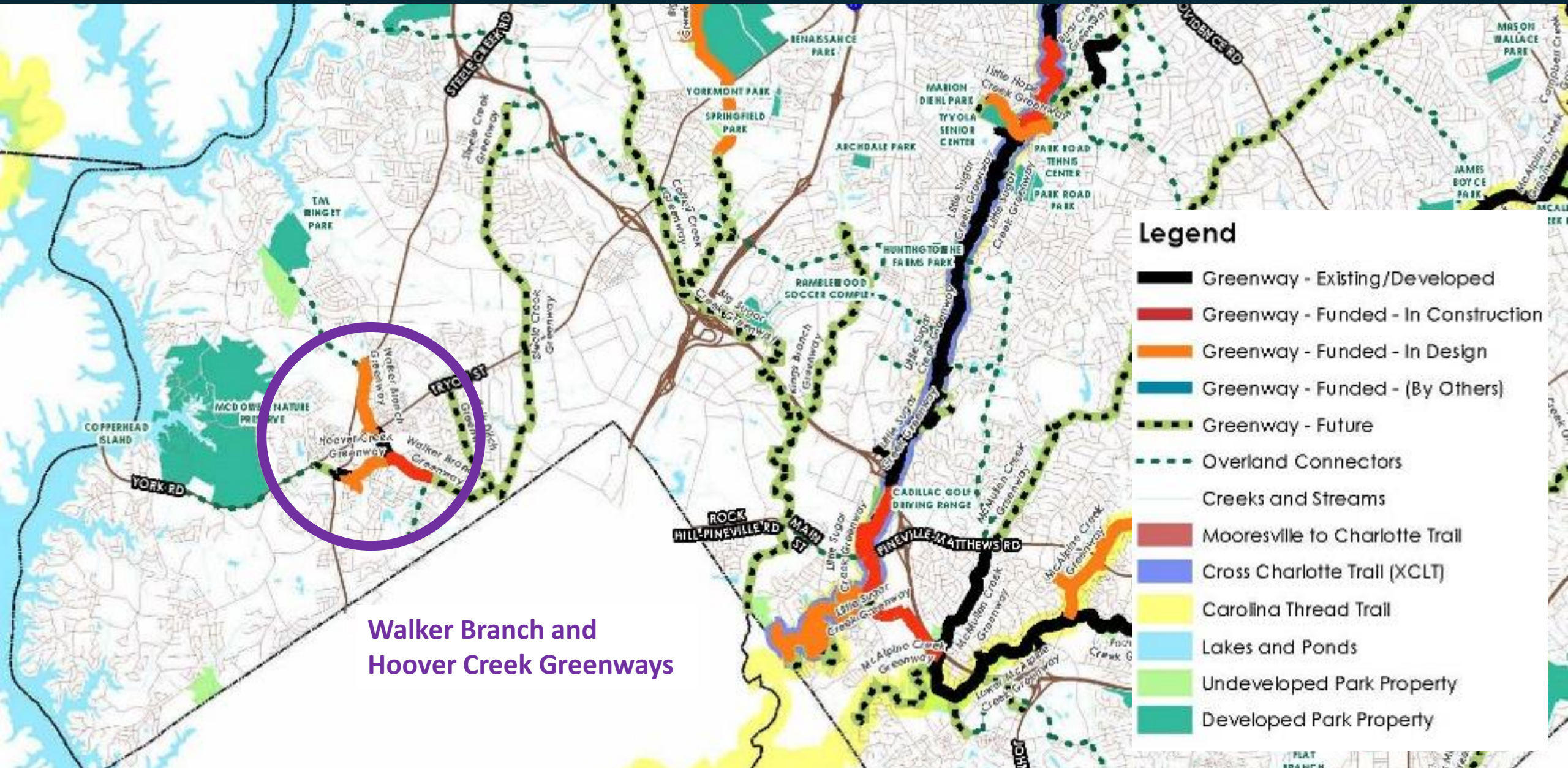


Projects In Steele Creek

Greenway Name	Scope	Greenway Miles	Anticipated Completion
Walker Branch Greenway	South Tryon Street to Smith Road	0.6 miles	2020
Walker Branch/ Hoover Creek Greenways	Sledge Road to S. Tryon Street/ Steele Creek Road to Walker Branch Greenway	1.5 miles	2023
Total:		2.1 miles	



Greenway Project Locations



Legend

- Greenway - Existing/Developed
- Greenway - Funded - In Construction
- Greenway - Funded - In Design
- Greenway - Funded - (By Others)
- Greenway - Future
- Overland Connectors
- Creeks and Streams
- Mooresville to Charlotte Trail
- Cross Charlotte Trail (XCLT)
- Carolina Thread Trail
- Lakes and Ponds
- Undeveloped Park Property
- Developed Park Property

Walker Branch and Hoover Creek Greenways

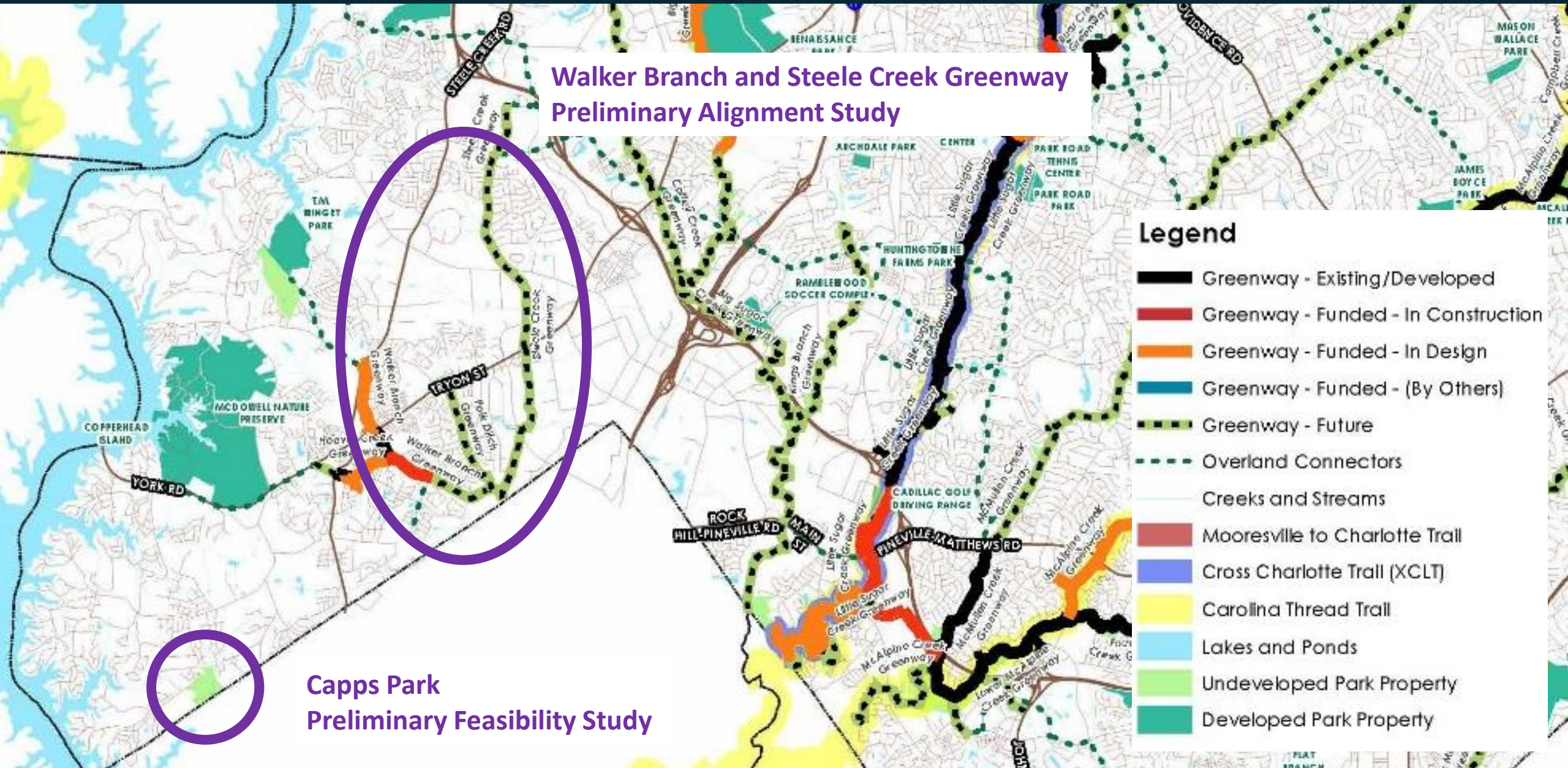
Planning for the Future

Walker Branch and Steele Creek Greenway Preliminary Alignment Study

Capps Park Preliminary Feasibility Study

Legend

- Greenway - Existing/Developed
- Greenway - Funded - In Construction
- Greenway - Funded - In Design
- Greenway - Funded - (By Others)
- Greenway - Future
- Overland Connectors
- Creeks and Streams
- Mooresville to Charlotte Trail
- Cross Charlotte Trail (XCLT)
- Carolina Thread Trail
- Lakes and Ponds
- Undeveloped Park Property
- Developed Park Property



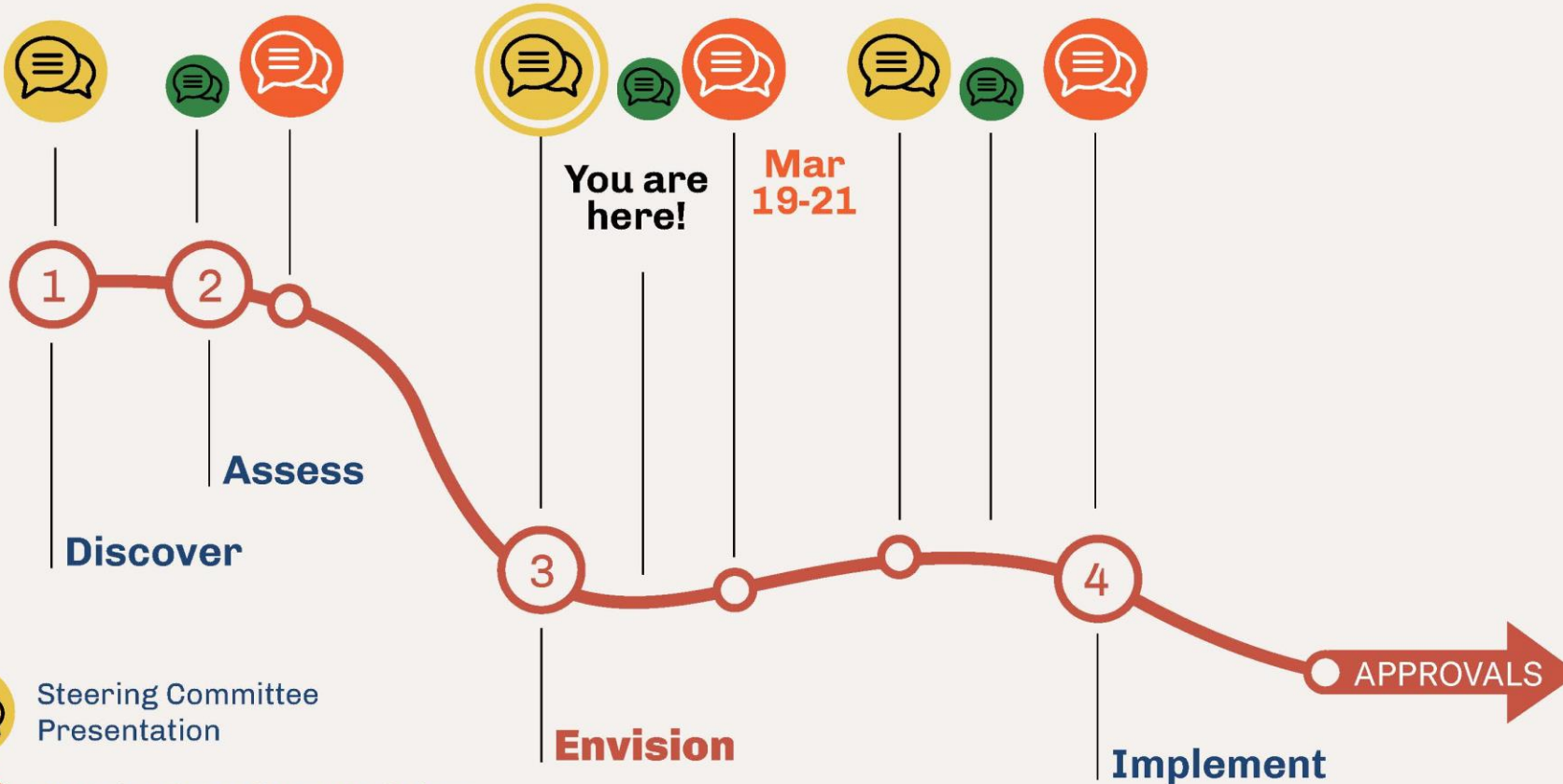
Meck Playbook

Mecklenburg County Park & Recreation
2020 Master Plan



Meck Playbook

AUG SEP OCT NOV DEC JAN FEB MAR APR MAY JUN JUL AUG SEP OCT NOV DEC



 Steering Committee Presentation

 Steering Committee Workshop + Stakeholder Committee + Public Meeting

 Steering Committee Review

Meck Playbook



March 19 5:30-7:30

BEATTIES FORD LIBRARY

March 20 11:30-1:30

CORNELIUS TOWN HALL

March 21 10:00-12:00

ALBEMARLE ROAD RECREATION CENTER

www.meckplaybook.com

@meckparkrec

#meckplaybook





Thank you!

Contact:

Bert Lynn, PLA, ASLA

Capital Planning Division Director

980-314-1012

Bert.Lynn@mecklenburgcountync.gov

Katie Lloyd, PLA, ASLA

Senior Planner

980-314-1035

Katie.Lloyd@Mecknc.gov