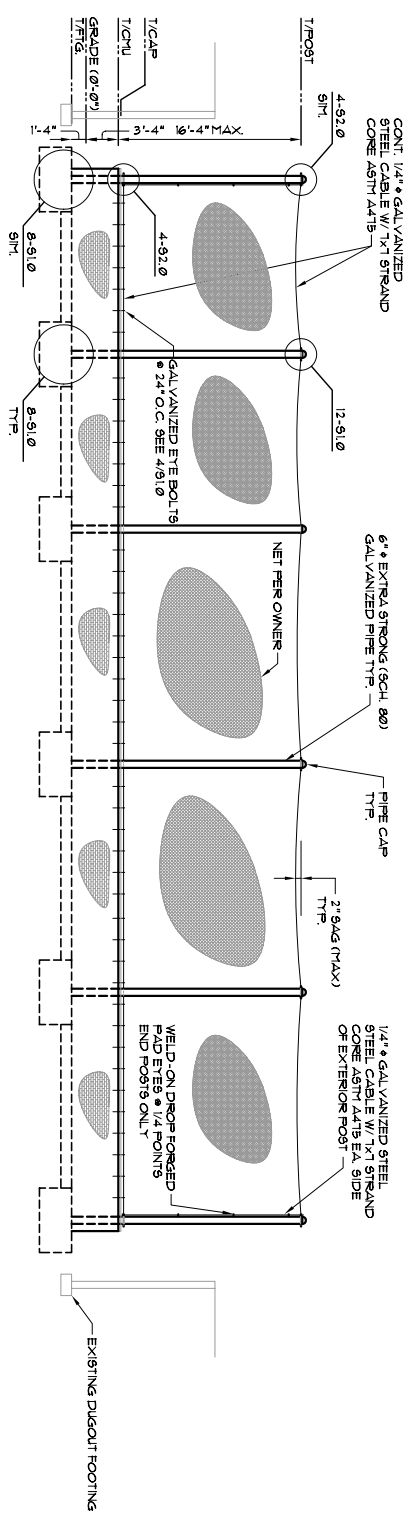
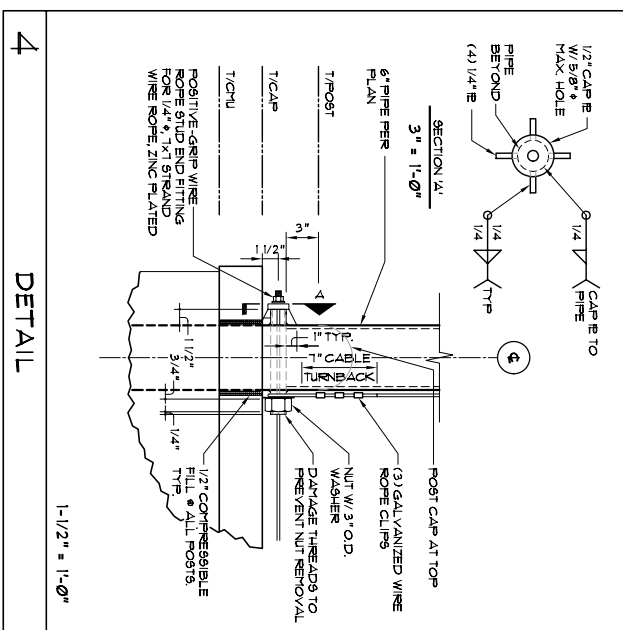


**1 BACKSTOP FOUNDATION PLAN**  
SCALE: 1/8" = 1'-0"

BACKSTOP FOUNDATION PLAN NOTES:  
1. TOTAL AMOUNT OF ADDED INTERIOR SQUARE FOOTAGE = 510 sq. ft.  
THIS AMOUNT INCLUDES NEW WALL AND POST FOOTINGS.  
2. VERIFY ALL DIMENSIONS INDICATED.



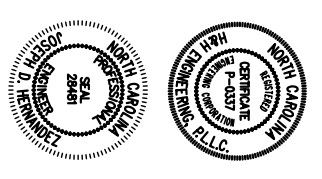
**2 BACKSTOP ELEVATION**  
SCALE: 1/8" = 1'-0"



**4 DETAIL**



**H&H ENGINEERING, PLLC**  
Consulting Engineers - Structural  
1718 KENTON DRIVE, SUITE 202C  
CHARLOTTE, NORTH CAROLINA 28203  
www.hhhengineering.com



**NEW BASEBALL  
BACKSTOP**  
OLYMPIC HIGH SCHOOL  
CHARLOTTE, NC

**CONSTRUCTION  
DOCUMENTS**

REVISIONS:

Drawn By: **DH** / Approved By: **DH**  
Sheet Number: **S2.0**  
Date: **07 JAN 2007** / Project Number: **069660**