
MARCH 2020 TOWNHALL

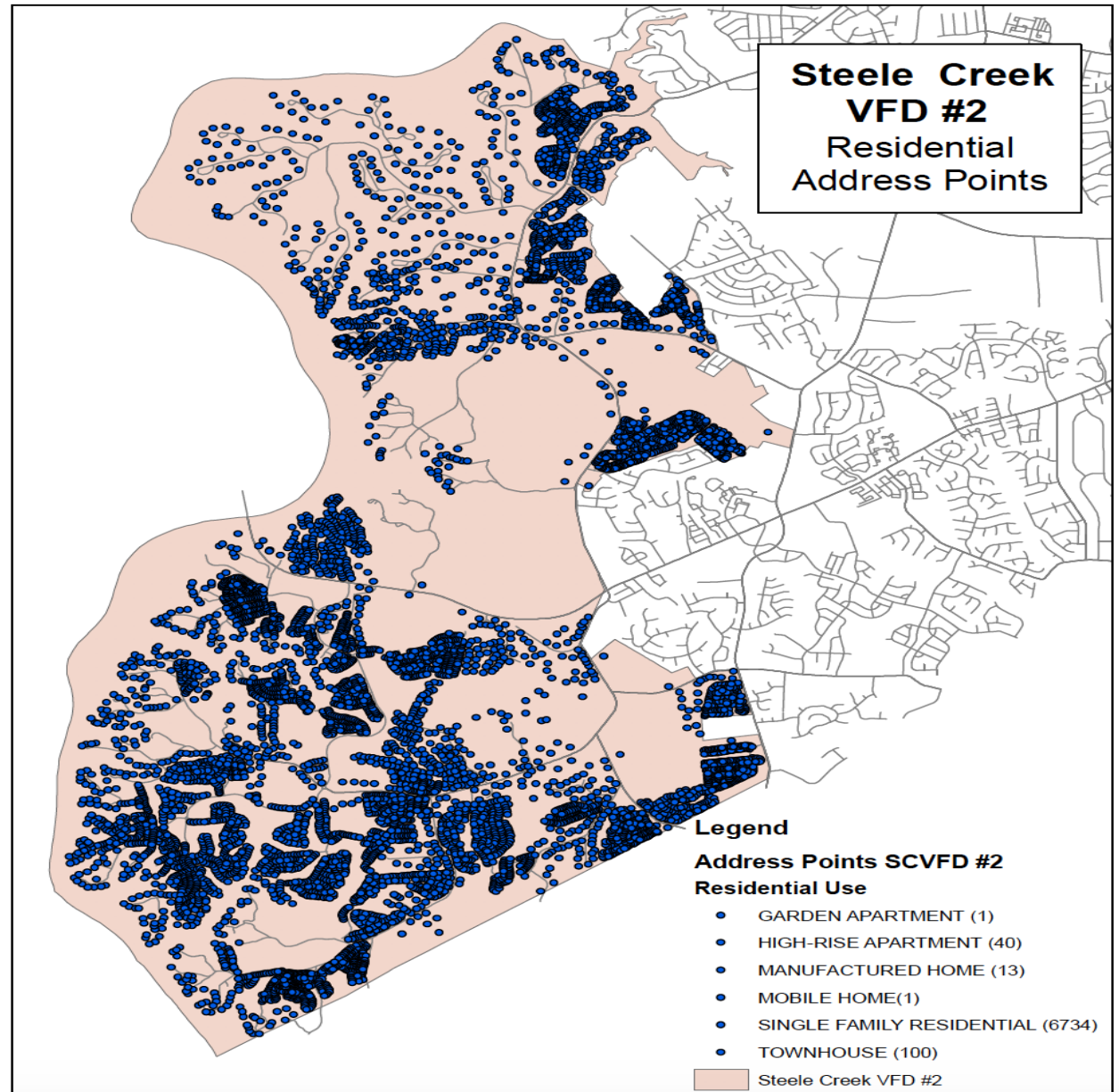
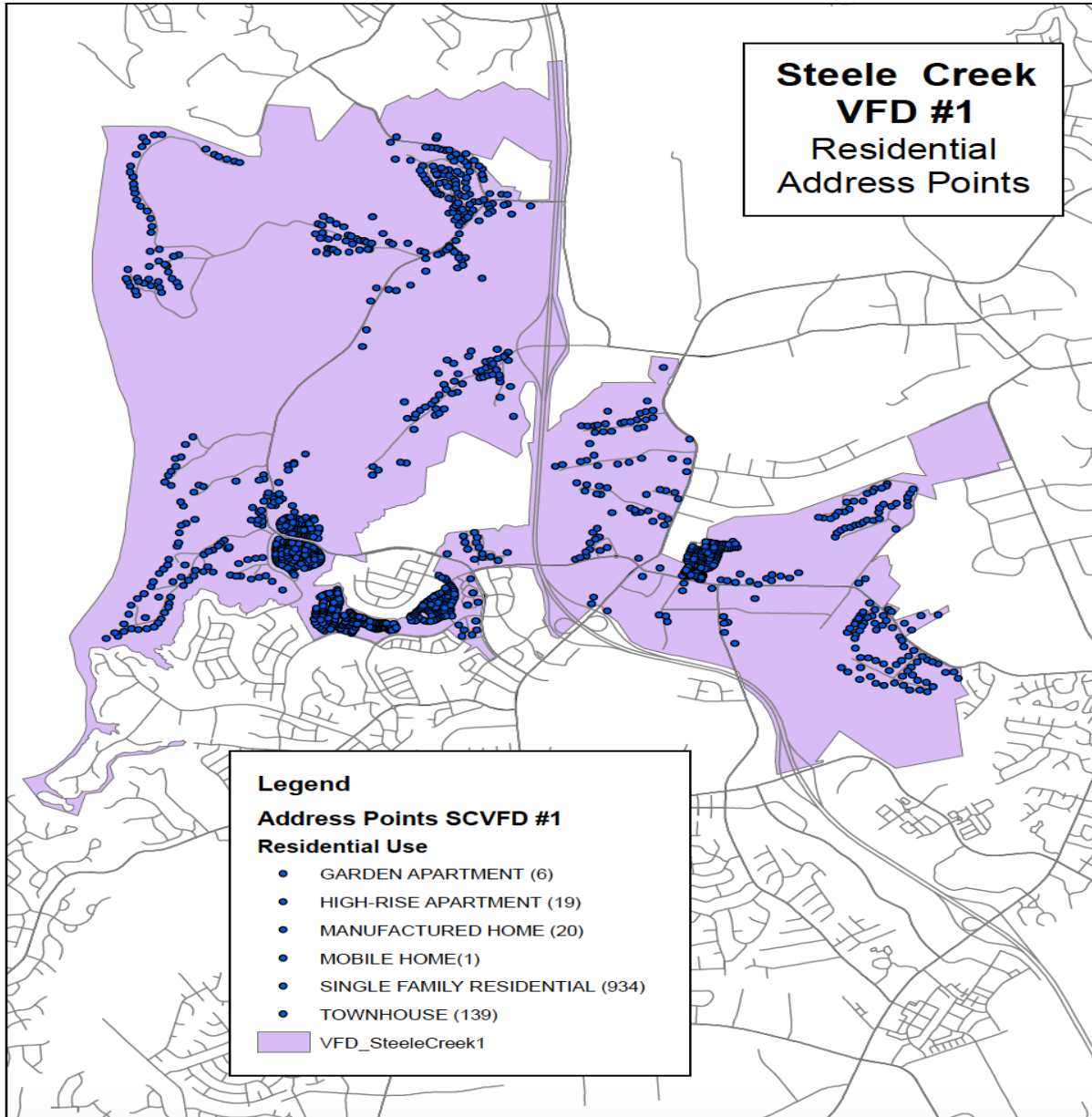


WHO IS STEELE CREEK FIRE DEPARTMENT

- Since 1954 SCVFD serves the unincorporated areas of Steele Creek with Fire, Rescue and EMS response
- District response area- 26.2 square miles
- Population of 18,000
- Two fire stations
 - Station 1- 8700 Steele Creek Rd
 - Station 2- 13225 S. Tryon St
- Former all Volunteer Department, became combination paid & volunteer firefighters in 2009
- Current staffing- 2 Firefighter/EMT's per station 24/7



RESPONSE AREA





- Educate Boy Scout troops at fire station for fire safety and prevention
- Partner with McDowell Park to host ROTC event
- Install Smoke Detector and Batteries for residents
- Partner with local schools for fundraising, community events and career days
 - Winget Park Elementary
 - Palisades Episcopal School
 - Palisades Park
- Neighborhood events
 - Santa parades
 - Community safety

Increase public safety

- Reducing time from onset of emergency to fire personnel on scene is critical to positive outcome
 - House fires double in size every 60 seconds, more firefighters on scene faster, result in reduced loss of life and property
- Three firefighters provide higher level of care during life threatening and critical events

Firefighter safety

- Replacement of aged equipment to meet minimum standards set by National Fire Protection Association (NFPA)
 - Lack of capital funding in prior years has left a deficit

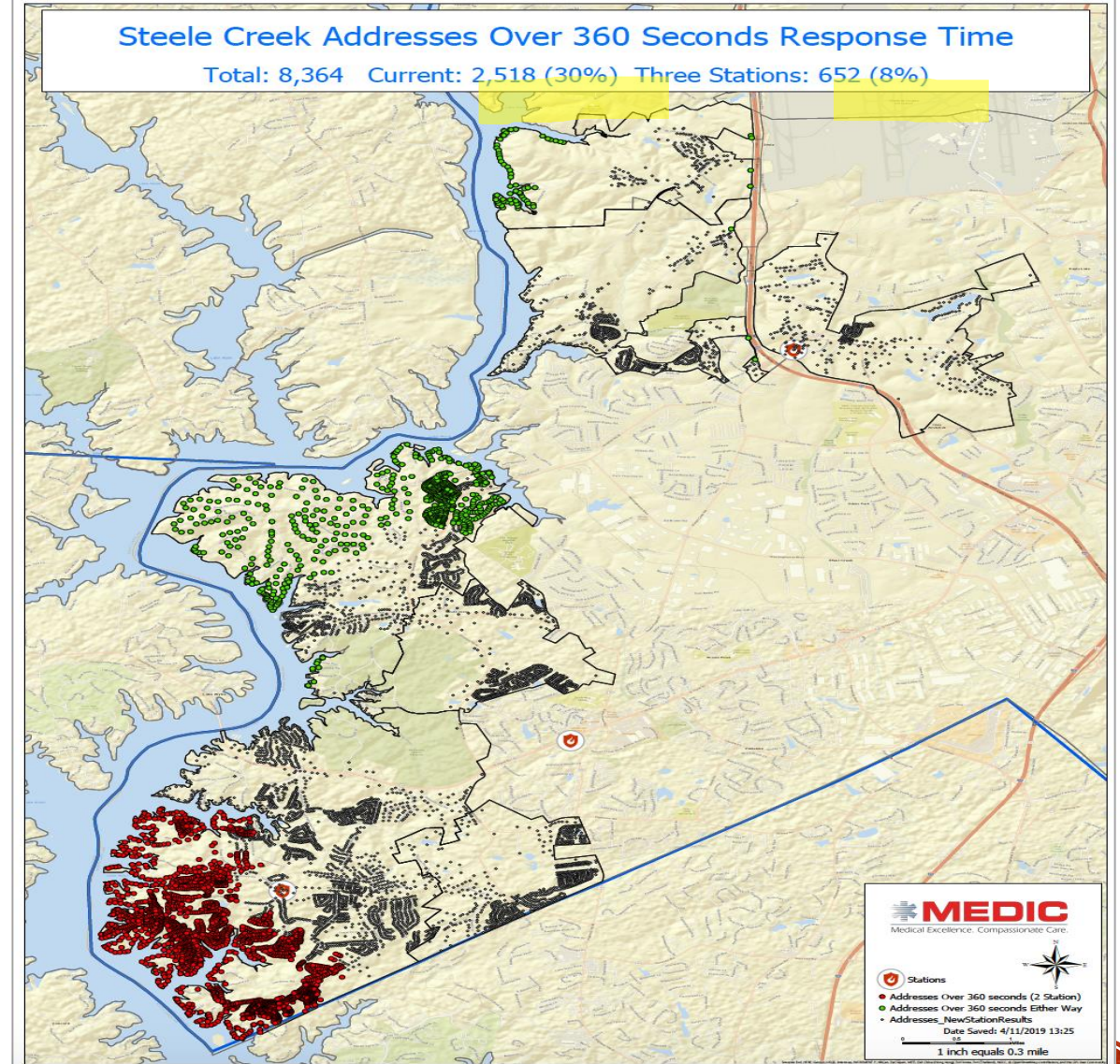
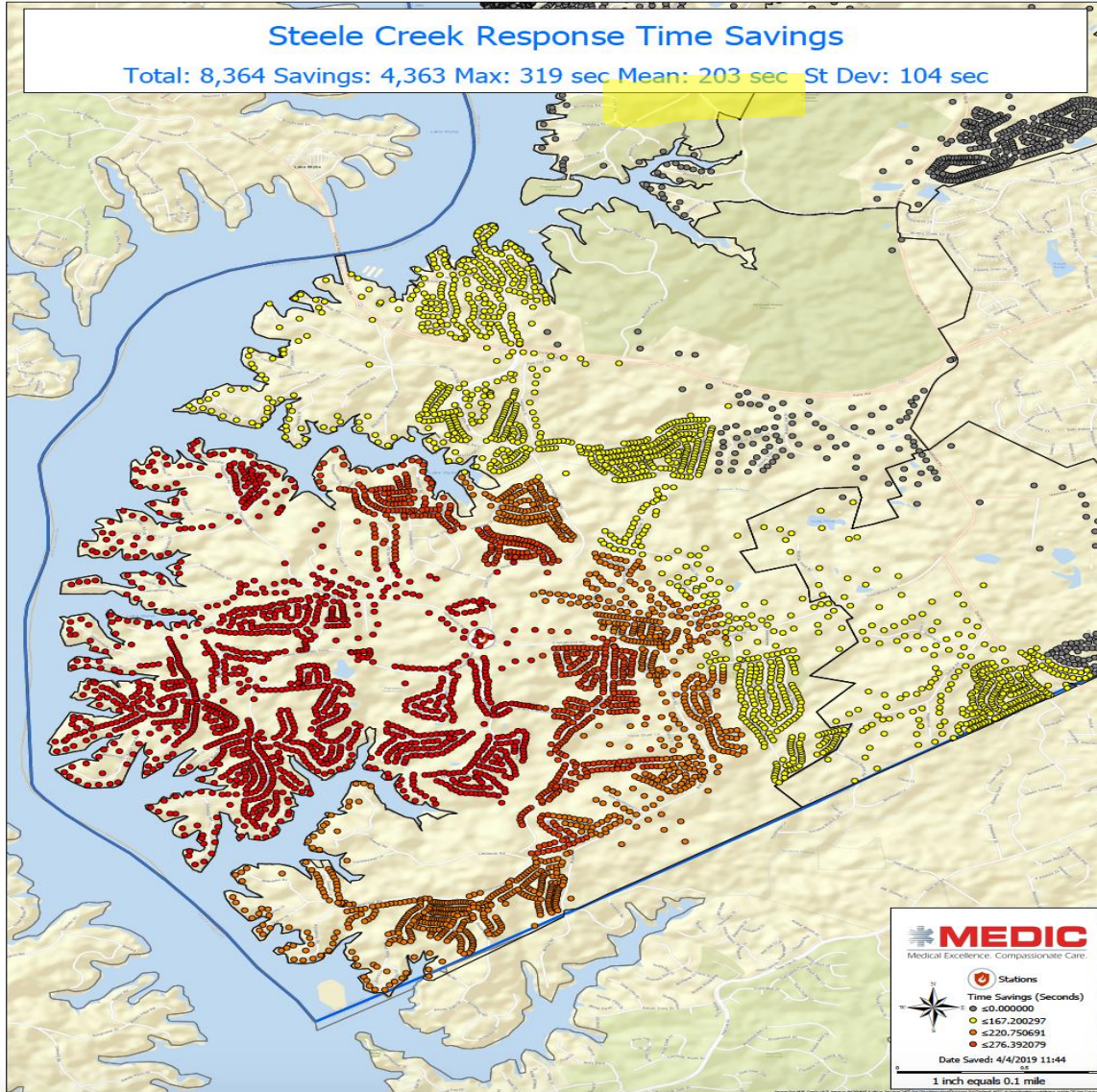
Rapid growth of community

- Population increased over 125% since 2009
- Total incidents have increased over 100% the past ten years
- 2,000 new residences approved by city planning to be built
- Increased traffic congestion reduces response time in southern district

WHY THE BUDGET INCREASE REQUEST



REDUCTION IN RESPONSE TIMES



Steele Creek

- 2020 budget \$1.12 million with tax rate of 6.667 cents per \$100 value
- \$560,000 per station includes payroll, operations and capital

Charlotte

- CFD annual budget \$133 million
 - Per station is \$3.16 million
 - Does not include capital
- CFD newest fire station cost over \$9 million on construction

Wake County Fire Protection District

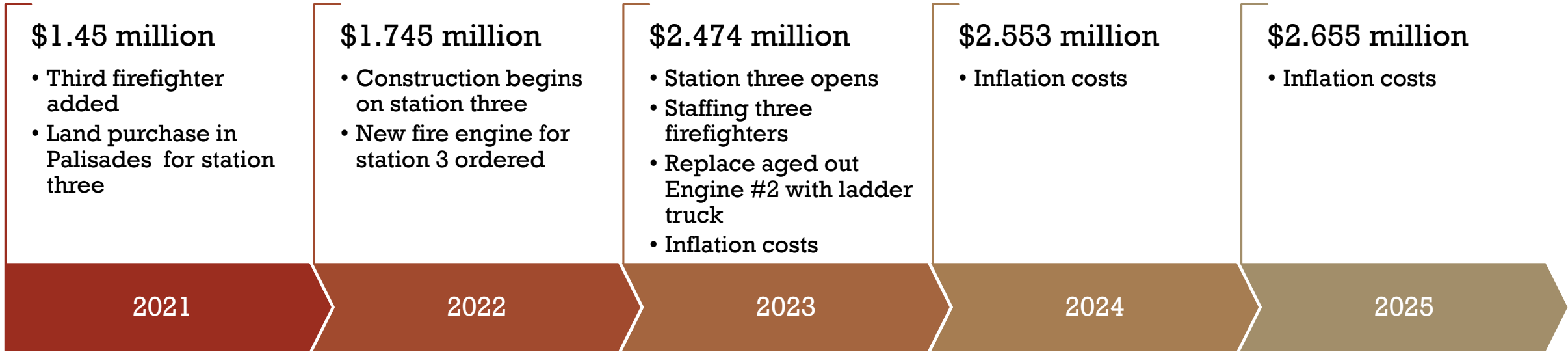
- 2017-transitioned to minimum staffing-three firefighters
- Current tax rate: 9.6 cents
- Fire Commission provides oversight of fire departments in ETJ

Fort Mill Fire Department

- Nearly identical in population, size and incident responses
- Two Fire stations
- 2020 budget \$4.192 million
 - Includes operations and capital

COMPARISON





5-YEAR BUDGET ANALYSIS





Additional Staffing and Capital

- Three firefighters per station
- Increase yearly capital
 - Supply turnout gear and equipment to new staff
 - Purchase new equipment/apparatus due to wear and tear
 - Upgrade/maintenance to stations (built in 1950s)

Add Station Three in Palisades area of Steele Creek

- Purchase land; start design process
- Current response times to Palisades area exceed NFPA response time standard of
 - Response times will be reduced by average of 203 seconds, aligning with standard

Increase Fire protection tax rate

- In 2019 rate .08 cents per \$100 value
- Property re-evaluation saw rate reduced to .0667 cents per \$100 value, prior to fire department budgets